



Test2Sens®

*Mobile and Modular
Proximity Laboratory*



In short...

The context	04
The concept	06
Interior equipment	07
Exterior equipment	08
Possibility of acquisition	11

All collection and analysis of biological samples are usually carried out in medical analysis laboratories. The circumstances of the current pandemic lead us to have to refer infected patients or suspected of infection to ephemeral laboratories. These units are physically independent from the laboratories and dedicated to the detection and analysis of microbial pathogens. This allows the isolation of infected patients from other patients in a laboratory. To be relevant, such a room or treatment unit must be installed in places easily accessible to vehicles and organized in such a way that essential health and safety conditions are preserved, specially distance between patients.

Should be strategically installed since it can be easily transportable and/or reubicated according to the identified epidemic focus, which can be any geographic locations with identified and managed clusters such as villages, businesses or healthcare establishments.



The team

Test2Sens®

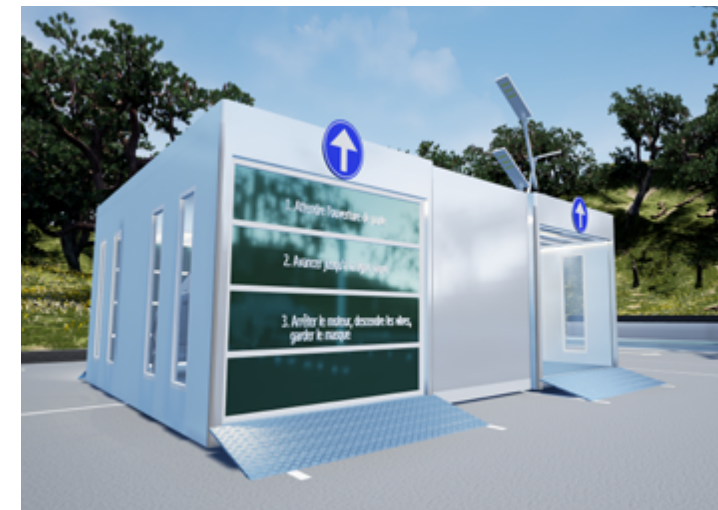
Directed by a multidisciplinary team combining expertise in medical biology, architecture but also project management, Test2Sens is lead by the Biologist Samuel Roblin, the Architect Michel Gourion and the Designer Katie Hayon.





The context

- The Covid 19 is an amplifier of the needs of new medical organizations.
- Local actors are looking for efficient and rapid technical tools to limit the social impact of contagious diseases.
- Organizational costs are very tight.
- The regulatory environment for laboratory tests and models will change.



Why Test2Sens® ?

- To master locally the technical and economic issues of Public Health within the globalized microbial ecology.
- Provide patients and practitioners with an optimal care pathway.
- Specifically target the infected population.
- Facilitate the performance of tests.
- Be as close as possible to the population
- Avoid the use of unsuitable and expensive municipal premises for disinfection.



The concept

Mobile Proximity

Laboratory

Test2Sens® is an innovative project which has been the subject of several patent filings. This offers a mobile Proximity Laboratory solution, modular, suitable for setting up microbiological test samples for COVID-19 extended to other contagious diseases or other emerging diseases. This laboratory also helps meet health, safety and accessibility requirements.

Microbiological collections by nasal or pharyngeal swabs can be extended to blood and urine collections.

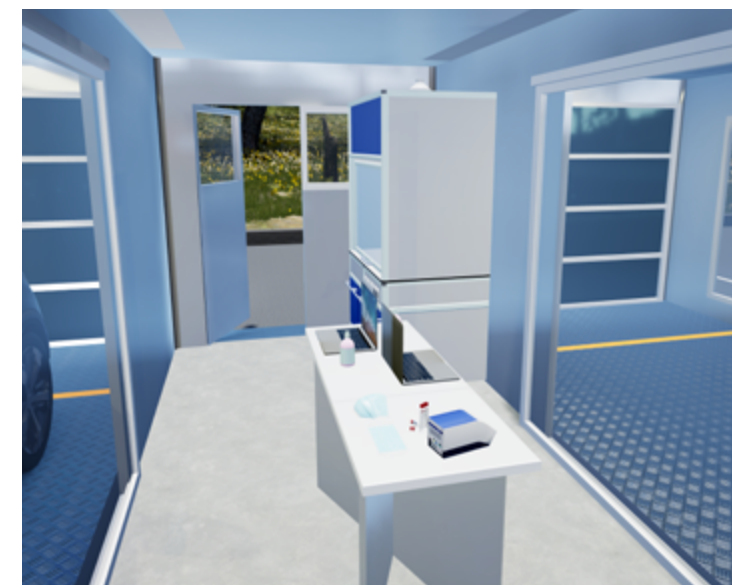
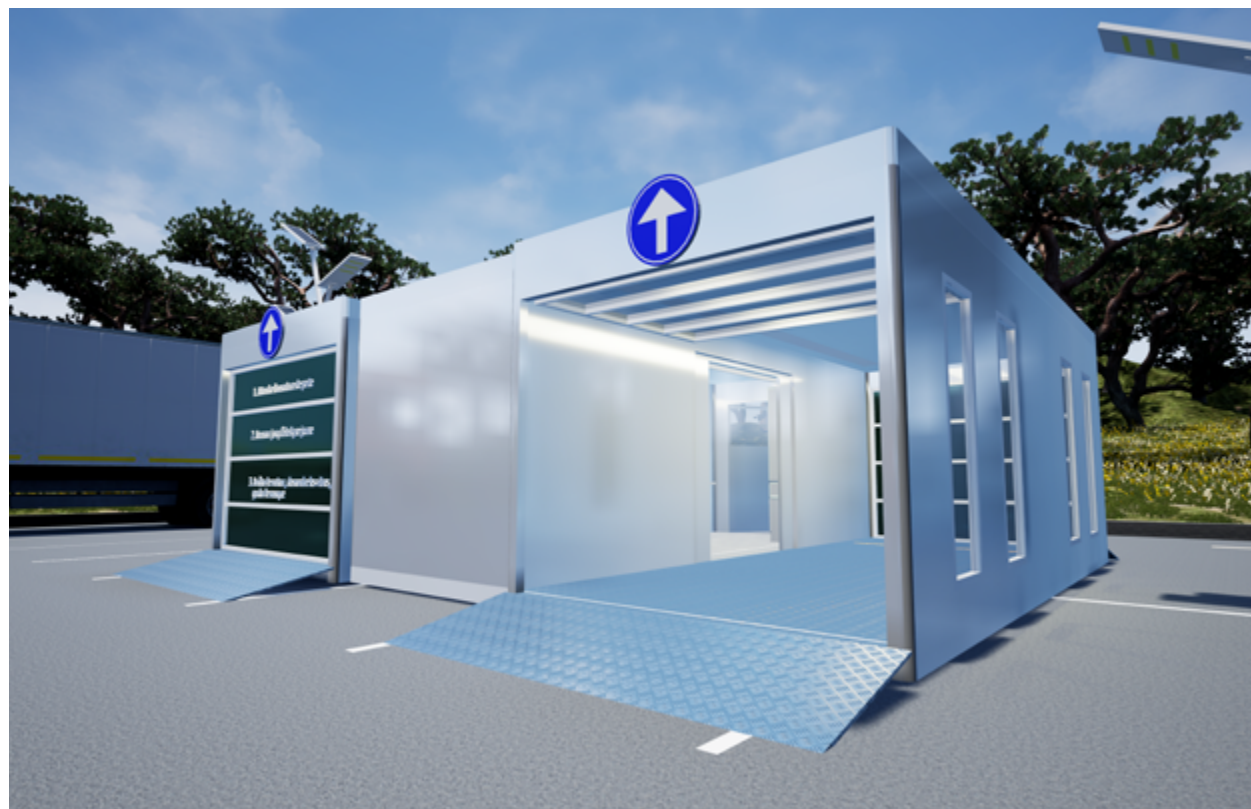
The Test2Sens® unit consists of different spaces:

- a sampling area with two side openings for a two-way drive according to the positioning of the people to test in vehicles.un espace laboratoire.
- a laboratory space.
- a sanitary space for the management of tests urinary.
- a pedestrian reception area can be substituted for one of the two drives.



- Floor and ceiling walls covered in PVC with grooved angles to facilitate cleaning and disinfection of the room
- IP64 waterproof electrical installations (lighting, sockets, switchboard and switches)
- Paillasses treated against nosocomial diseases.
- Heating provided by a heat transfer fluid radiator, with remote control
- CMV
- 4G router for internet access
- Hot water production by 15 liter tank
- WC with drainable black water tank
- Hand wash basin with femoral control

Interior Equipment





Outside Equipment

- The Test2Sens® lab cladding is provided by easy-to-maintain materials, namely:
 - Métal
 - Composite-compact materials
 - Glass
 - Polycarbonate
- Hot air flow above the two side openings.
- Overhead lighting in the room provided by a roof frame
- Two independent lighting heads in gables

Vehicle parking

On each side of Test2Sens® is positioned a shelter made up of:

- A metallic structure with wall / floor / ceiling filling in insulated sandwich panels.
- Two access doors that will be automatic, flexible and roll up vertically with precise signage.
- Peripheral lighting by an LED strip.

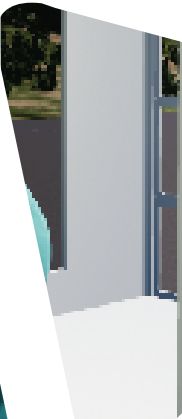
Presence of mechanical ventilation for the evacuation of exhaust gases.

The interior floor is on the same level as the rest of the Test2Sens® lab.

Access and exit are made using a metal ramp.



Test2Sens

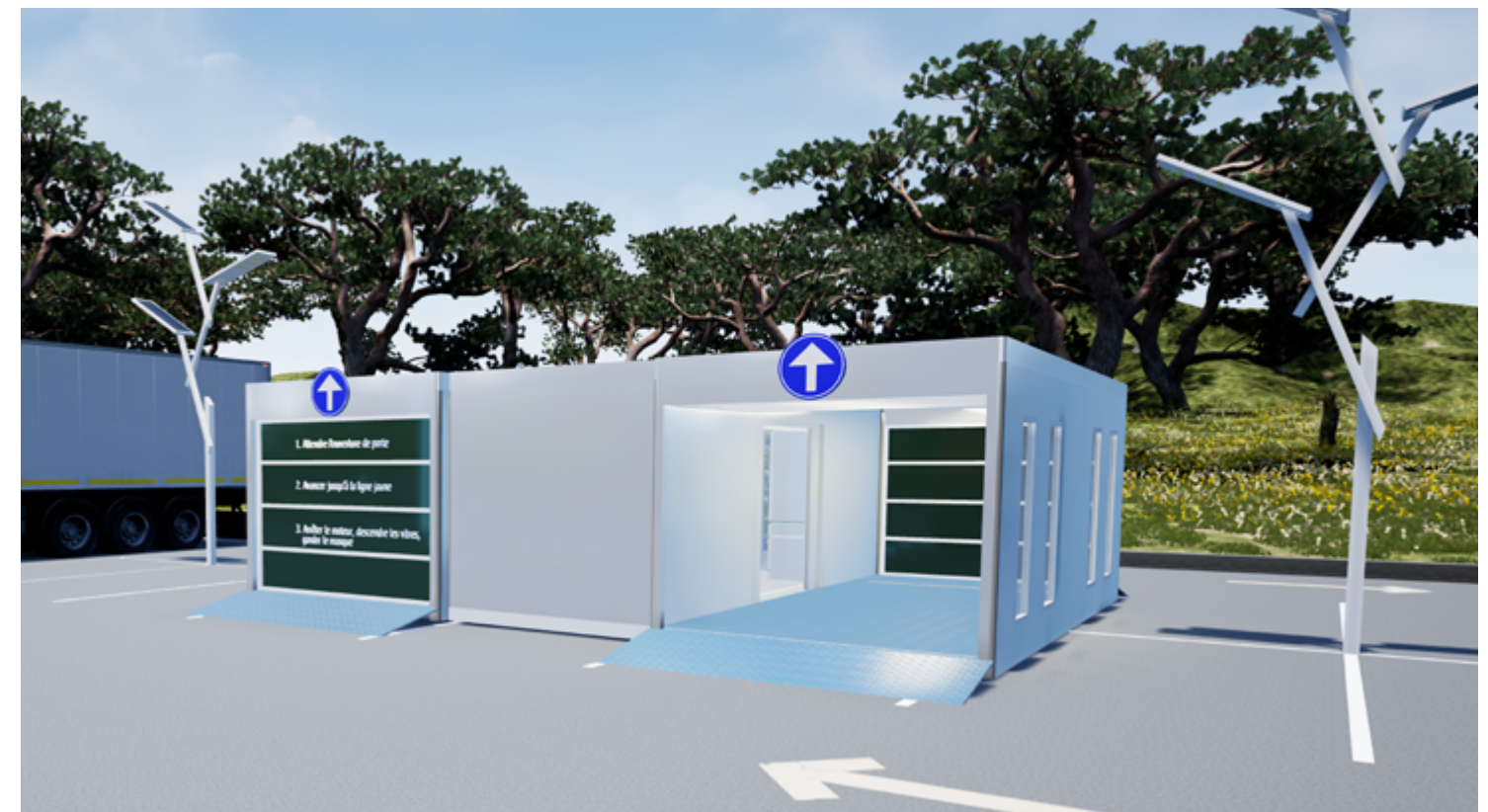


The **Test2Sens**® solution provides suitable and manageable medical tool

- The municipality or community of municipalities and the laboratory choose their level of commitment, economic and technical, and their operational context.
- The population has a multifunctional specialized service for any infectious problem.
- Nursing offices can participate in the samples.
- An MPL (“Mobile Proximity Laboratory”) network can fully cover the critical population areas of the laboratory on the basis of Demography / Transport time / Service time

Possibilities acquisition

- Purchase or rental by the Territorial Collectivity.
- Purchase or Rental by Laboratories.
- Financing method to be defined with our banking partners.
- Several possible options :
 - 1 single-tunnel lab
 - 1 double tunnel lab
 - 1 lab with car tunnel + pedestrian tunnel
 - 100% energy autonomous option
 - Other options available on request





Test2Sens ®



41 Route de Granville
50800 FLEURY
FRANCE



0787936262



info@test2sens.com